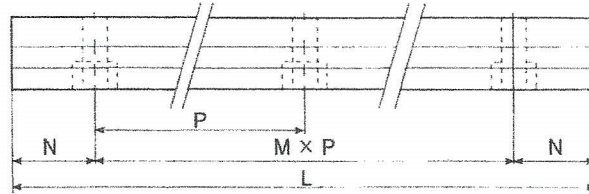
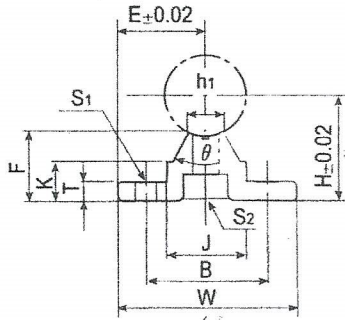
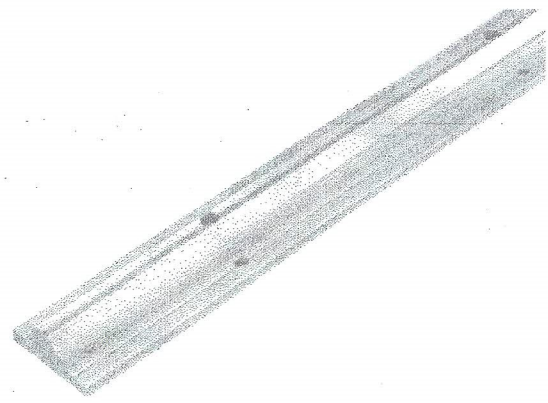


SA 軸心支持座

Supporter For Tapped Shaft

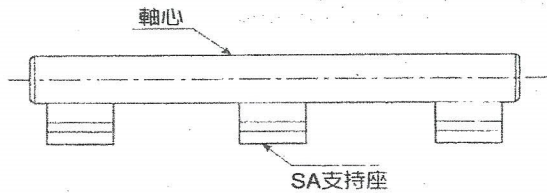
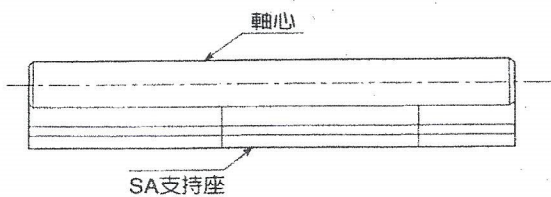
材質：鋁合金
Material : Aluminum alloy



單位(unit) : mm

型號 Model No.	軸徑 Shaft diameter	主要尺寸 Main dimensions										裝配尺寸 Mounting dimensions					重量 Weight g
		H	E	W	L	F	T	K	J	h ₁	B	N	M x P	S ₁	S ₂		
SA16-600	16	25	20	40	600	17.8	5	11.7	18.5	8	80°	30	75	3x150	5.5	M5	600
SA16-1200	16	25	20	40	1200	17.8	5	11.7	18.5	8	80°	30	75	7x150	5.5	M5	1200
SA20-600	20	27	22.5	45	600	17.7	5	10	19	8	50°	30	75	3X150	5.5	M6	610
SA20-1200					1200									7X150			
SA25-600	25	33	27.5	55	600	21	6	12	21.5	8	50°	35	100	2x200	6.5	M6	800
SA25-1200					1200									5X200			
SA30-600	30	37	30	60	600	22.8	7	13	26.5	10.3	50°	40	100	2X200	6.5	M8	1,100
SA30-1200					1200									5X200			
SA40-600	40	48	37.5	75	600	29.4	9	17	38	15.5	50°	55	150	1X300	9	M8	1,950
SA40-1200					1200									3X300			

使用例：



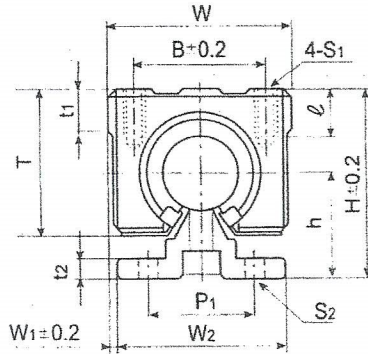
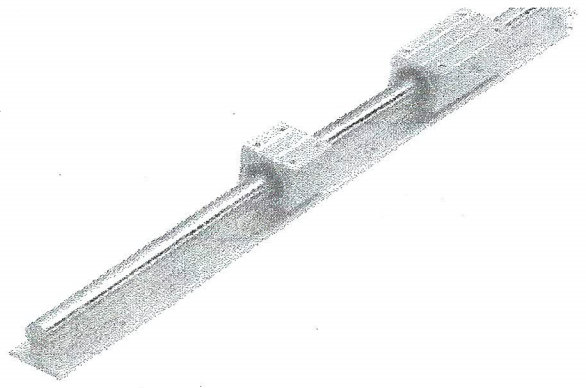
LMC-C LMCL-C

軸心式滑軌(不生銹)

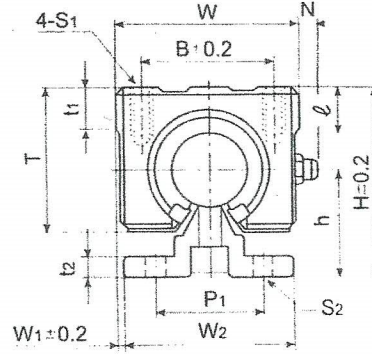
Anticorrosive Linear Guide

滑塊：線性軸承

Linear Block : Linear ball bearing



LMC-C
LMC-C16 ~ LMC-C40



LMCL-C
(加長型/Long Type)
LMCL-C16 ~ LMCL-C30

型號 Model No.	軸徑 Shaft diameter	組合尺寸 Dimensions of assembly				滑塊尺寸 Dimensions of block							
		H	h	W ₁	W	L ₁	B	C	t ₁	ℓ	S ₁	T	N
LMC-C16	16	45	25	2.5	45	45	32	30	9	12	M5	33	—
LMCL-C16						85		60					8
LMC-C20	20	50	27	1.5	48	50	35	35	11	12	M6	39	—
LMCL-C20						96		70					8
LMC-C25	25	60	33	2.5	60	65	40	40	14	12	M6	47	—
LMCL-C25						130		100					8
LMC-C30	30	70	37	5	70	70	50	50	15	18	M8	56	—
LMCL-C30						140		110					8
LMC-C40	40	90	48	7.5	90	90	65	65	20	20	M10	72	—

Example of identification number:

LMC-C25-B2-2400

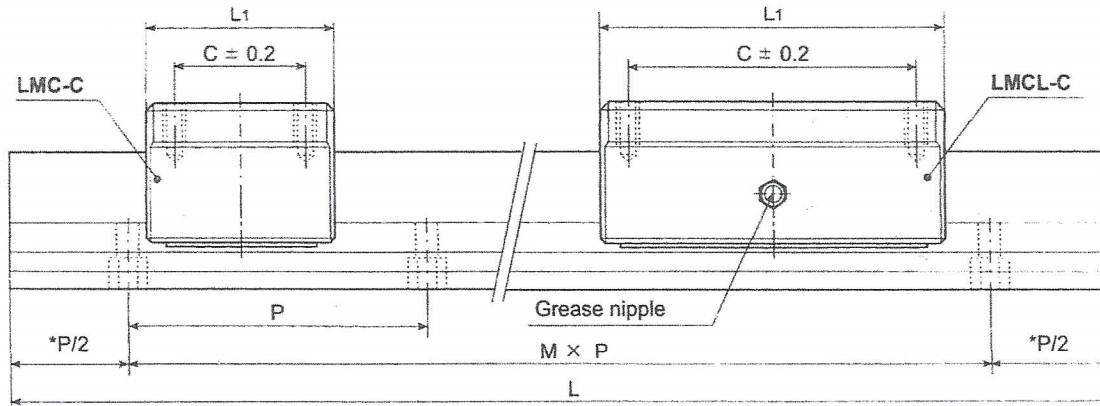
① ② ③ ④

① Model No: LMC-C, LMCL-C

② Shaft Diameter: Shaft: Hardened(HRC62±2)ground and chromium plated

③ Number of blocks per track rail: B1: 1 Block B2: 2 Blocks B3: 3 Blocks,...

④ Length of track rail: (2400mm)



註：*記號，全長L視長度情況，則不受P/2之限制。
 Note : * is to be changed by the length L.

單位(unit) : mm

軌道尺寸 Dimensions of track rail						基本動定格荷重 Basic dynamic load rating	基本靜定格荷重 Basic static load rating	型號 Model No.
W ₂	P ₁	t ₂	P	S ₂	L (max)	C (kgf)	Co (kgf)	
40	30	5	150	5.5	3,600	79	120	LMC-C16
						158	240	LMCL-C16
45	30	5	150	5.5	4,200	90	140	LMC-C20
						180	280	LMCL-C20
55	35	6	200	6.5	4,200	100	160	LMC-C25
						200	320	LMCL-C25
60	40	7	200	6.5	4,200	160	280	LMC-C30
						320	560	LMCL-C30
75	55	9	300	9	4,200	220	410	LMC-C40

訂購例：

LMC-C25-B2-2400

① ② ③ ④

① 型號：LMC-C, LMCL-C

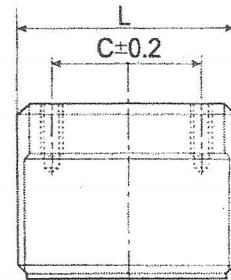
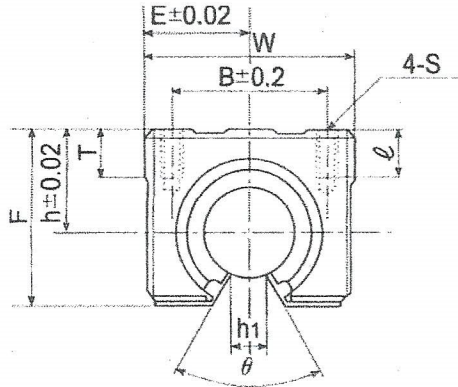
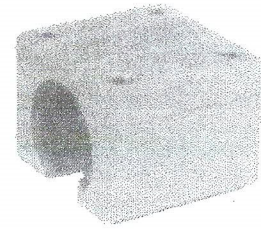
② 軸徑：軸心熱處理(HRC 62±2)鍍硬鉻及研磨

③ 1支滑軌上滑塊之個數：B1：1個、B2：2個、B3：3個...

④ 滑軌長度：(2400mm)

LMC 開口型連座線性軸承

Open Type Linear Block (Linear Ball Bearing Type)



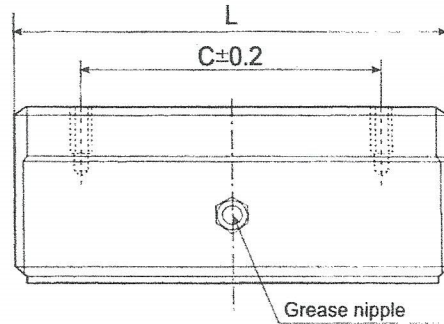
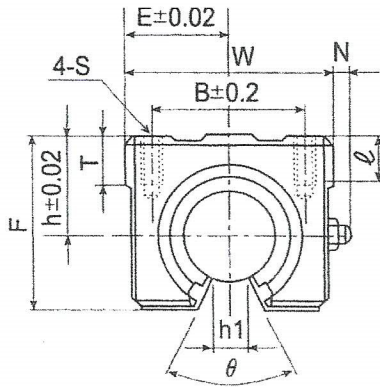
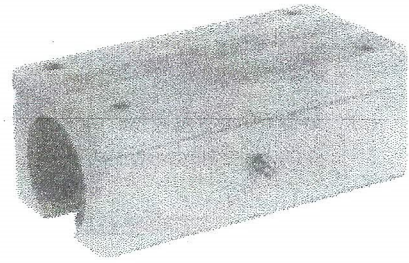
單位(unit) : mm

型號 Model No.	軸徑 Shaft diameter	主要尺寸 Main dimensions								裝配尺寸 Mounting dimension				線性軸承 Linear ball bearing			重量 Weight g
		h	E	W	L	F	T	h1	θ	B	C	S	φ	型號 Linear ball bearing No.	基本動定格荷重 Basic dynamic load rating C (kgf)	基本靜定格荷重 Basic static load rating Co(kgf)	
LMC16UU	16	20	22.5	45	45	33	9	10	80°	32	30	M5	12	LM16UU OP	79	120	150
LMC20UU	20	23	24	48	50	39	11	10	60°	35	35	M6	12	LM20UU OP	90	140	200
LMC25UU	25	27	30	60	65	47	14	11.5	50°	40	40	M6	12	LM25UU OP	100	160	450
LMC30UU	30	33	35	70	70	56	15	14	50°	50	50	M8	18	LM30UU OP	160	280	630
LMC40UU	40	42	45	90	90	72	20	19	50°	65	65	M10	20	LM40UU OP	220	410	1,330

LMC-L 開口加長型連座線性軸承

Open Long Type Linear Block

(Linear Ball Bearing Type)



單位(unit) : mm

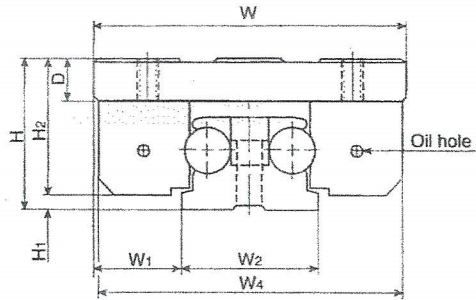
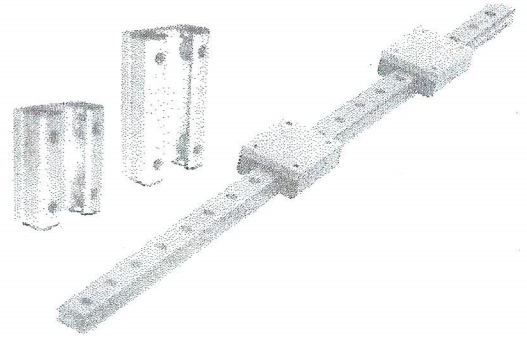
型號 Model No.	軸徑 Shaft diameter	主要尺寸 Main dimensions									裝配尺寸 Mounting dimension				線性軸承 Linear ball bearing			重量 Weight g
		h	E	W	L	F	T	N	h1	θ	B	C	S	φ	型號 Linear ball bearing No.	基本動定格荷重 Basic dynamic load rating C (kgf)	基本靜定格荷重 Basic static load rating Co(kgf)	
LMC16LUU	16	20	22.5	45	85	33	9	8	10	80°	32	60	M5	12	LM16UU OPX2	158	240	300
LMC20LUU	20	23	24	48	96	39	11	8	10	60°	35	70	M6	12	LM20UU OPX2	180	280	400
LMC25LUU	25	27	30	60	130	47	14	8	11.5	50°	40	100	M6	12	LM25UU OPX2	200	320	900
LMC30LUU	30	33	35	70	140	56	15	8	14	50°	50	110	M8	18	LM30UU OPX2	320	560	1,260

LGD 軸心式滑軌(不生銹)

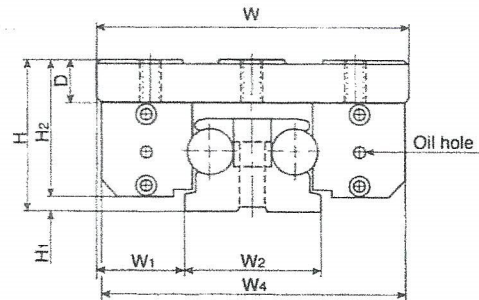
Anticorrosive Linear Guide

一個滑塊含4個滾輪軸承

One Block with 4 Rolling Bearings



LGD8 / LGD8L



LGD12 / LGD12L
LGD16 / LGD 16L

型號 Model No.	軸徑 Shaft diameter	組合尺寸 Dimensions of assembly			滑塊尺寸 Dimensions of block									
		H	H ₁	W ₁	W	W ₄	H ₂	D	L ₁	B	B ₁	C	C ₁	Size depth
LGD8	8	30	4	16	60	59	26	9	70	40	10	50	10	M6x9
LGD8L									100			80		
LGD12	12	40	4	23	82	80	36	12	100	27	14	38	12	M6x12
LGD12L									140			58		
LGD16	16	50	5	35	120	118	45	14	150	45	15	60	15	M8x16
LGD16L									190			80		

Example of identification number:

LGD12-B2-R1800C

① ② ③

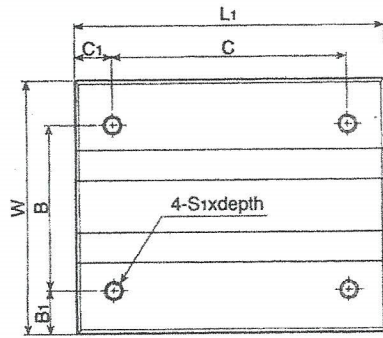
① Model No.

② Number of blocks per track rail:

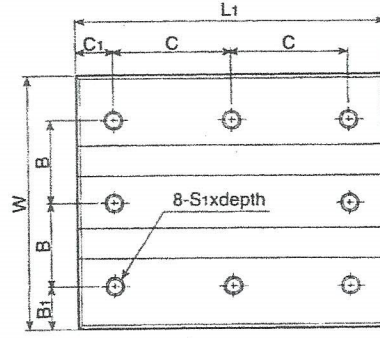
B1: 1 Block B2: 2 Blocks B3: 3 Blocks, ...

③ Length of track rail (1800mm):

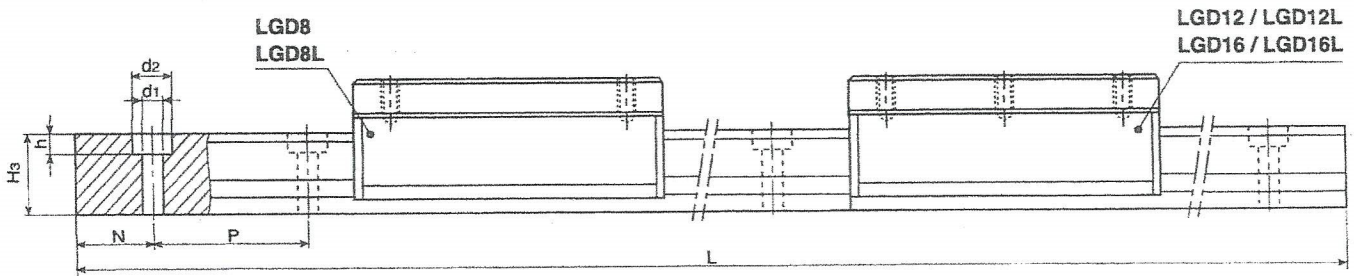
Shaft: Hardened(HRC62±2)ground and chromium plated



LGD8 / LGD8L

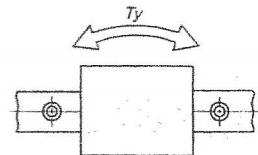
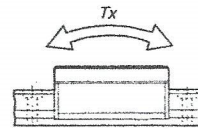
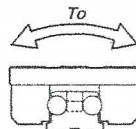


LGD12 / LGD12L
LGD16 / LGD16L



單位(unit) : mm

軌道尺寸 Dimensions of track rail								基本動定格荷重 Basic dynamic load rating C (kgf)	基本靜定格荷重 Basic static load rating Co(kgf)	容許靜力矩 Allowable static moment			型號 Model No.
W2	H3	d1	d2	h	P	N	L(max)			To (kgf-m)	Tx (kgf-m)	Ty (kgf-m)	
28	20	5.5	9.5	5.2	50	25	3,000	80	130	3.6	3.0	3.2	LGD8
										3.6	4.6	5.5	LGD8L
36	25	6.6	12.6	6.2	50	25	4,000	180	290	5.4	4.0	4.8	LGD12
										5.4	7.2	8.5	LGD12L
50	32	9	20	9	80	40	4,000	330	530	13.5	19.8	21.6	LGD16
										13.5	35.6	38.2	LGD16L



訂購例 :

LGD12-B2-R1800C

① ② ③

① 型號

② 1支滑軌上滑塊之個數 :

B1: 1個、B2: 2個、B3: 3個, ...

③ 滑軌長度 (1800mm):

軸心: 熱處理 (HRC 62±2), 鍍硬鉻及研磨

LGD12E

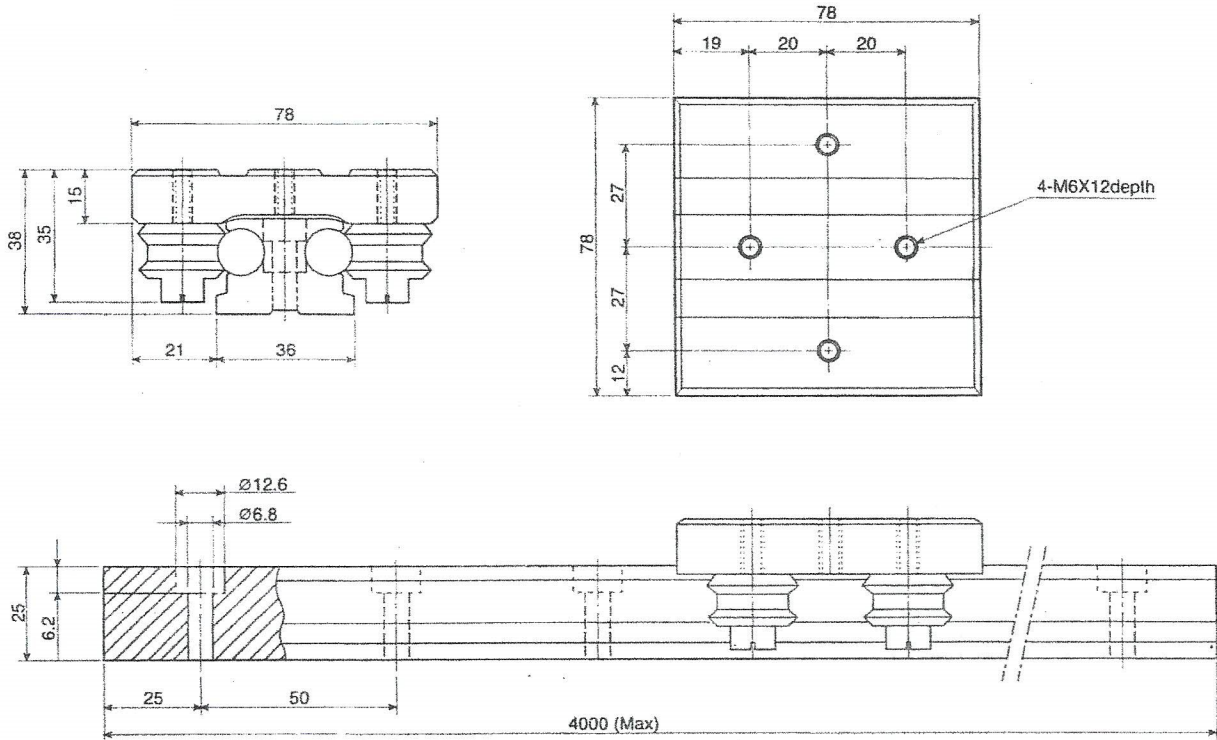
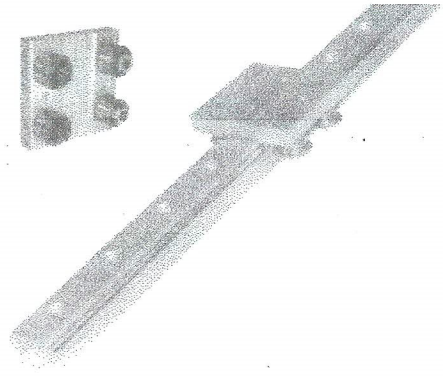
軸心式滑軌(不生銹)

Anticorrosive Linear Guide

經濟型 Economical Type

一個滑塊含4個滾輪軸承

One Block with 4 Rolling Bearings



訂購例:

LGD12E-B2-R1800C

① ② ③

① 型號: LGD12E

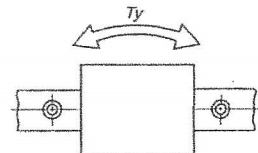
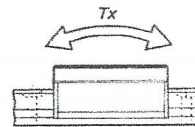
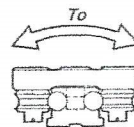
② 1支滑軌上滑塊之個數:

B1: 1個、B2: 2個、B3: 3個, ...

③ 滑軌長度(1800mm):

軸心: 熱處理(HRC 62±2), 鍍硬鉻及研磨

軸徑 Shaft diameter	基本動定格荷重 Basic dynamic load rating C (kgf)	基本靜定格荷重 Basic static load rating Co(kgf)	容許靜力矩 Allowable static moment			重量 Weight	
			To (kgf-m)	Tx (kgf-m)	Ty (kgf-m)	滑塊 Block kg	軌道 Track rail kg/m
12	140	230	4.3	3.2	3.8	0.36	3.2



Example of identification number:

LGD12E-B2-R1800C

① ② ③

① Model No.:LGD12E

② Number of blocks per track rail:

B1: 1 Block B2: 2 Blocks B3: 3 Blocks, ...

③ Length of track rail (1800mm):

Shaft:Hardened(HRC62±2)ground and chromium plated

LGD12XL

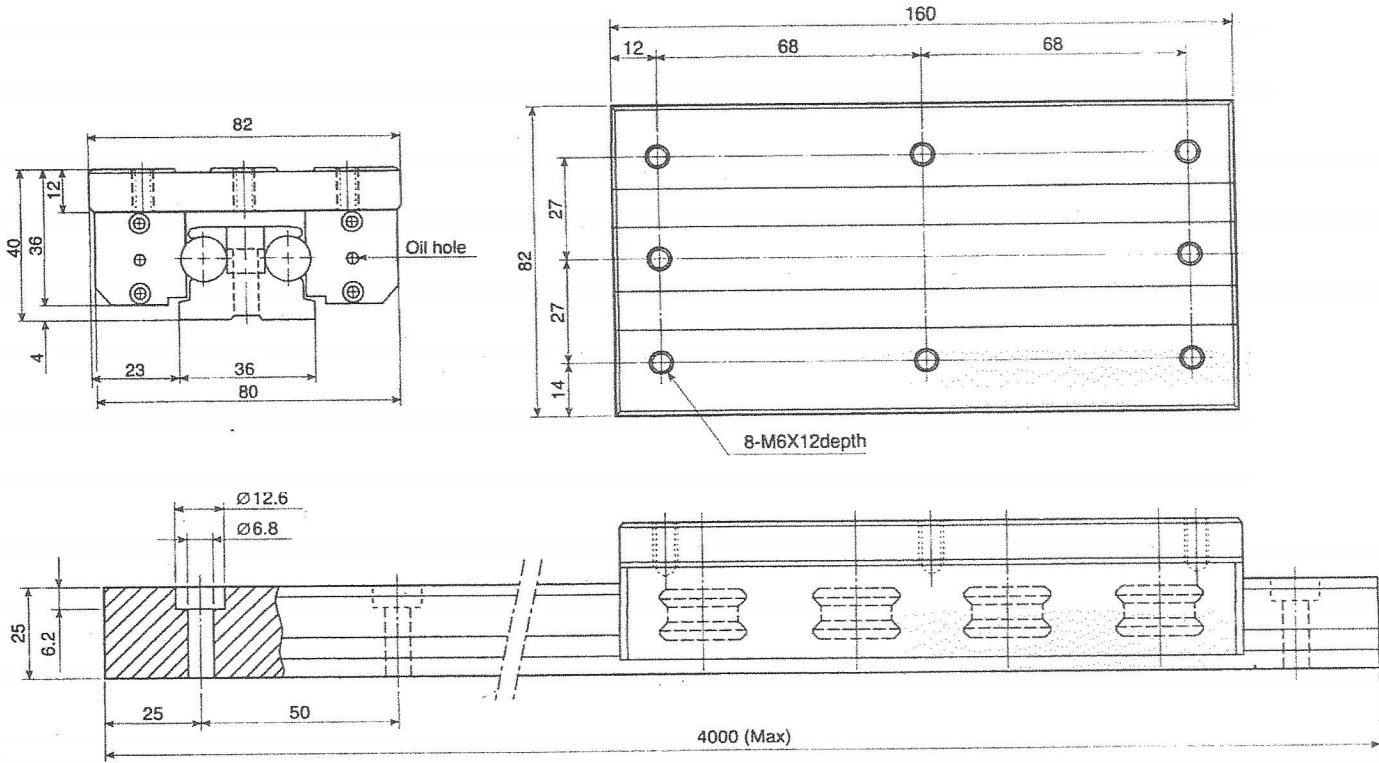
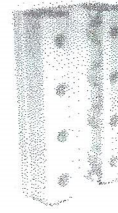
軸心式滑軌(不生鏽)

Anticorrosive Linear Guide

荷重型 Heavy Load Type

一個滑塊含8個滾輪軸承

One Block with 8 Rolling Bearings



訂購例：

LGD12XL-B2-R1800C

① ② ③

① 型號：LGD12XL

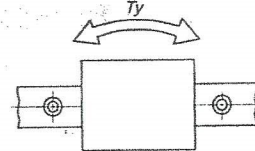
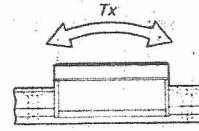
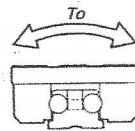
② 1支滑軌上滑塊之個數：

B1：1個、B2：2個、B3：3個、...

③ 滑軌長度(1800mm)：

軸心：熱處理(HRC 62±2)，鍍硬鉻及研磨

軸徑 Shaft diameter	基本動定格荷重 Basic dynamic load rating C (kgf)	基本靜定格荷重 Basic static load rating Co(kgf)	容許靜力矩 Allowable static moment			重量 Weight	
			To (kgf-m)	Tx (kgf-m)	Ty (kgf-m)	滑塊 Block kg	軌道 Track rail kg/m
12	290	460	8.7	11.2	13.6	0.86	3.2



Example of identification number:

LGD12XL-B2-R1800C

① ② ③

① Model No.:LGD12XL

② Number of blocks per track rail:

B1: 1 Block B2: 2 Blocks B3: 3 Blocks, ...

③ Length of track rail (1800mm):

Shaft:Hardened(HRC62±2)ground and chromium plated