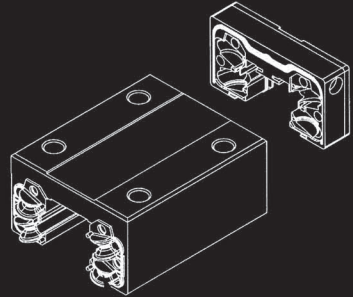
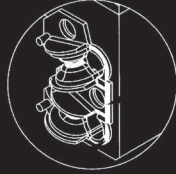
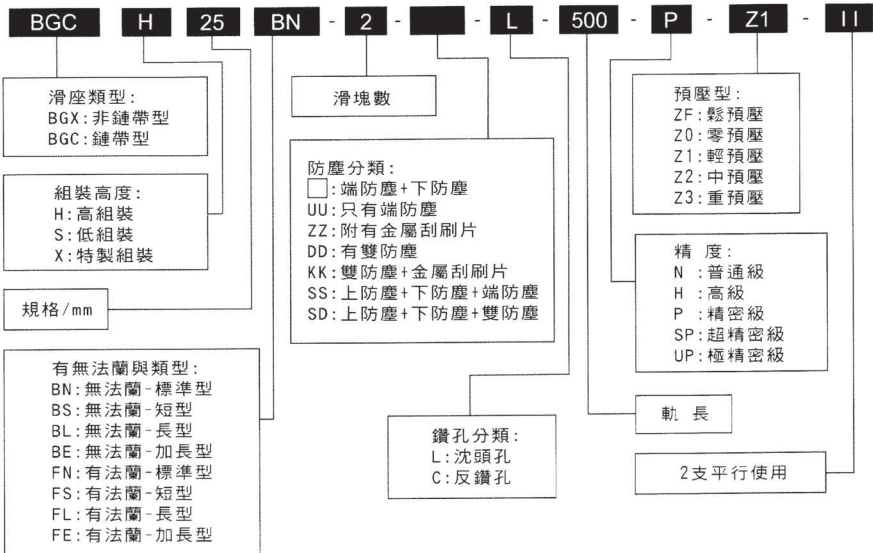


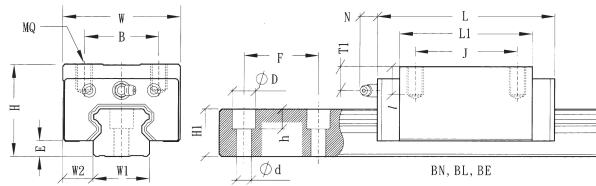
更多之儲油空間



編碼原則

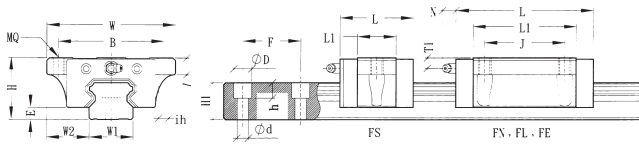


BGX系列規格尺寸表 BGX(H-B)標準型



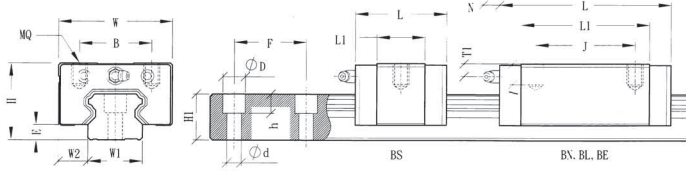
規格 型號	組裝規格-mm				滑塊-mm							滑動-mm						額定負載-Kgf		滑塊 Kgf	滑動 Kgf/M		
	H	W	W2	E	L	B	J	MQ	I	L1	Oil H	T1	N	W1	H1	F	d	D	h			C	C0
BGXH15BN	28	34	9.5	3.0	58.6	26	26	M4	6.0	40.2	M4X0.7	9.5	(5)	15	13.0	60	4.5	7.5	6.0	951	2001	0.19	1.28
BGXH20BN	30	44	12.0	4.5	69.3	32	36	M5	6.5	48.5	M6X1	7.1	(15.6)	20	16.3	60	6.0	9.5	8.5	1463	3110	0.31	2.15
BGXH20BL	30	44	12.0	4.5	82.1	32	50	M5	6.5	61.3	M6X1	7.1	(15.6)	20	16.3	60	6.0	9.5	8.5	1896	4030	0.36	2.15
BGXH25BN	40	48	12.5	5.8	79.7	35	35	M6	9.0	57.5	M6X1	14.2	(15.6)	23	19.2	60	7.0	11.0	9.0	2052	4188	0.45	2.88
BGXH25BL	40	48	12.5	5.8	94.4	35	50	M6	9.0	72.2	M6X1	14.2	(15.6)	23	19.2	60	7.0	11.0	9.0	2638	5383	0.66	2.88
BGXH25BE	40	48	12.5	5.8	109.1	35	50	M6	9.0	86.9	M6X1	14.2	(15.6)	23	19.2	60	7.0	11.0	9.0	2974	6454	0.80	2.88
BGXH30BN	45	60	16.0	7.0	94.8	40	40	M8	12.0	67.8	M6X1	11.0	(15.6)	28	22.8	80	9.0	14.0	12.0	3032	5565	0.91	4.45
BGXH30BL	45	60	16.0	7.0	105.0	40	60	M8	12.0	78.0	M6X1	11.0	(15.6)	28	22.8	80	9.0	14.0	12.0	3927	7207	1.04	4.45
BGXH30BE	45	60	16.0	7.0	130.5	40	60	M8	12.0	103.5	M6X1	11.0	(15.6)	28	22.8	80	9.0	14.0	12.0	4372	8842	1.36	4.45
BGXH35BN	55	70	18.0	7.5	111.5	50	50	M8	12.0	80.5	M6X1	15.0	(15.6)	34	26.0	80	9.0	14.0	12.0	4321	8272	1.50	6.25
BGXH35BL	55	70	18.0	7.5	123.5	50	72	M8	12.0	92.5	M6X1	15.0	(15.6)	34	26.0	80	9.0	14.0	12.0	5399	10336	1.80	6.25
BGXH35BE	55	70	18.0	7.5	153.5	50	72	M8	12.0	122.5	M6X1	15.0	(15.6)	34	26.0	80	9.0	14.0	12.0	5941	12777	2.34	6.25
BGXH45BN	70	86	20.5	8.9	129.0	60	60	M10	18.0	94.0	M8X1.25	24.4	(16)	45	31.1	105	14.0	20.0	17.0	5911	11105	2.28	9.60
BGXH45BL	70	86	20.5	8.9	145.0	60	80	M10	18.0	110.0	M8X1.25	24.4	(16)	45	31.1	105	14.0	20.0	17.0	7031	13209	2.67	9.60
BGXH45BE	70	86	20.5	8.9	174.0	60	80	M10	18.0	139.0	M8X1.25	24.4	(16)	45	31.1	105	14.0	20.0	17.0	8124	16650	3.35	9.60

BGX系列規格尺寸表 BGX(H-F)標準型



規格 型號	組裝規格-mm				滑塊-mm							滑動-mm						額定負載-Kgf		滑塊 Kgf	滑動 Kgf/M			
	H	W	W2	E	L	B	J	MQ	Ih	I	L1	Oil H	T1	N	W1	H1	F	d	D			h	C	C0
BGXH15FN	24	47	16.0	3.0	58.6	38	30	M5	4.4	8.0	40.2	M4X0.7	5.5	(5)	15	13.0	60	4.5	7.5	6.0	951	2001	0.21	1.28
BGXH15FL	24	47	16.0	3.0	66.1	38	30	M5	4.4	8.0	47.7	M4X0.7	5.5	(5)	15	13.0	60	4.5	7.5	6.0	1150	2419	0.23	1.28
BGXH20FN	30	63	21.5	4.5	69.3	53	40	M6	5.4	9.0	48.5	M6X1	7.1	(15.6)	20	16.3	60	6.0	9.5	8.5	1463	3110	0.40	2.15
BGXH20FL	30	63	21.5	4.5	82.1	53	40	M6	5.4	9.0	61.3	M6X1	7.1	(15.6)	20	16.3	60	6.0	9.5	8.5	1896	4030	0.46	2.15
BGXH25FN	36	70	23.5	5.8	79.7	57	45	M8	7.0	10.0	57.5	M6X1	10.2	(15.6)	23	19.2	60	7.0	11.0	9.0	2052	4188	0.57	2.88
BGXH25FL	36	70	23.5	5.8	94.4	57	45	M8	7.0	10.0	72.2	M6X1	10.2	(15.6)	23	19.2	60	7.0	11.0	9.0	2638	5383	0.72	2.88
BGXH25FE	36	70	23.5	5.8	109.1	57	45	M8	7.0	10.0	86.9	M6X1	10.2	(15.6)	23	19.2	60	7.0	11.0	9.0	2974	6454	0.89	2.88
BGXH30FN	42	90	31.0	7.0	94.8	72	52	M10	8.6	11.0	67.8	M6X1	8.0	(15.6)	28	22.8	80	9.0	14.0	12.0	3032	5565	1.10	4.45
BGXH30FL	42	90	31.0	7.0	105.0	72	52	M10	8.6	11.0	78.0	M6X1	8.0	(15.6)	28	22.8	80	9.0	14.0	12.0	3927	7207	1.34	4.45
BGXH30FE	42	90	31.0	7.0	130.5	72	52	M10	8.6	11.0	103.5	M6X1	8.0	(15.6)	28	22.8	80	9.0	14.0	12.0	4372	8842	1.66	4.45
BGXH35FN	48	100	33.0	7.5	111.5	82	62	M10	8.6	12.0	80.5	M6X1	8.0	(16)	34	26.0	80	9.0	14.0	12.0	4321	8272	1.50	6.25
BGXH35FL	48	100	33.0	7.5	123.5	82	62	M10	8.6	12.0	92.5	M6X1	8.0	(16)	34	26.0	80	9.0	14.0	12.0	5399	10336	1.90	6.25
BGXH35FE	48	100	33.0	7.5	153.5	82	62	M10	8.6	12.0	122.5	M6X1	8.0	(16)	34	26.0	80	9.0	14.0	12.0	5941	12777	2.54	6.25
BGXH45FN	60	120	37.5	8.9	129.0	100	80	M12	10.6	15.5	94.0	M8X1.25	14.4	(16)	45	31.1	105	14.0	20.0	17.0	5911	11105	2.27	9.60
BGXH45FL	60	120	37.5	8.9	145.0	100	80	M12	10.6	15.5	110.0	M8X1.25	14.4	(16)	45	31.1	105	14.0	20.0	17.0	7031	13209	2.68	9.60
BGXH45FE	60	120	37.5	8.9	174.0	100	80	M12	10.6	15.5	139.0	M8X1.25	14.4	(16)	45	31.1	105	14.0	20.0	17.0	8124	16650	3.42	9.60

BGX系列規格尺寸表 BGX(S-B)標準型



規格 型號	組裝規格-mm						滑塊-mm							滑軌-mm						額定負載-Kgf	滑塊	滑軌
	H	W	W2	E	L	B	J	MQ	I	L1	Oil H	T1	N	W1	H1	F	d	D	h			
BGX15BS	24	34	9.5	3.0	40.6	26	M4	4.8	22.2	M4X0.7	5.5	(5)	15	13.0	60	4.5	7.5	6.0	473	996	0.10	1.28
BGX15BN	24	34	9.5	3.0	58.6	26	M4	4.8	40.2	M4X0.7	5.5	(5)	15	13.0	60	4.5	7.5	6.0	951	2001	0.17	1.28
BGX15BL	24	34	9.5	3.0	66.1	26	M4	4.8	47.7	M4X0.7	5.5	(5)	15	13.0	60	4.5	7.5	6.0	1150	2419	0.18	1.28
BGX20BS	28	42	11.0	4.5	48.3	32	M5	5.5	27.5	M6X1	5.1	(15.6)	20	16.3	60	6.0	9.5	8.5	753	1600	0.17	2.15
BGX20BN	28	42	11.0	4.5	69.3	32	M5	5.5	48.5	M6X1	5.1	(15.6)	20	16.3	60	6.0	9.5	8.5	1463	3110	0.26	2.15
BGX25BS	33	48	12.5	5.8	54.5	35	M6	6.8	32.3	M6X1	7.2	(15.6)	23	19.2	60	7.0	11.0	9.0	1049	2141	0.21	2.88
BGX25BN	33	48	12.5	5.8	79.7	35	M6	6.8	57.5	M6X1	7.2	(15.6)	23	19.2	60	7.0	11.0	9.0	2052	4188	0.38	2.88
BGX25BL	36	48	12.5	5.8	79.7	35	M6	9.0	57.5	M6X1	10.2	(15.6)	23	19.2	60	7.0	11.0	9.0	2052	4188	0.40	2.88
BGX25BL	36	48	12.5	5.8	94.4	35	M6	9.0	72.2	M6X1	10.2	(15.6)	23	19.2	60	7.0	11.0	9.0	2638	5383	0.54	2.88
BGX25BE	36	48	12.5	5.8	109.1	35	M6	9.0	86.9	M6X1	10.2	(15.6)	23	19.2	60	7.0	11.0	9.0	2974	6454	0.67	2.88
BGX30BS	42	60	16.0	7.0	64.2	40	M8	10.0	37.2	M6X1	8.0	(15.6)	28	22.8	80	9.0	14.0	12.0	1503	2758	0.50	4.45
BGX30BN	42	60	16.0	7.0	94.8	40	M8	10.0	67.8	M6X1	8.0	(15.6)	28	22.8	80	9.0	14.0	12.0	3032	5565	0.80	4.45
BGX30BL	42	60	16.0	7.0	105.0	40	M8	10.0	78.0	M6X1	8.0	(15.6)	28	22.8	80	9.0	14.0	12.0	3927	7207	0.94	4.45
BGX30BE	42	60	16.0	7.0	130.5	40	M8	10.0	103.5	M6X1	8.0	(15.6)	28	22.8	80	9.0	14.0	12.0	4372	8842	1.16	4.45
BGX35BS	48	70	18.0	7.5	75.5	50	M8	10.0	44.5	M6X1	8.0	(15.6)	34	26.0	80	9.0	14.0	12.0	2166	4146	0.80	6.25
BGX35BN	48	70	18.0	7.5	111.5	50	M8	10.0	80.5	M6X1	8.0	(15.6)	34	26.0	80	9.0	14.0	12.0	4321	8272	1.20	6.25
BGX35BL	48	70	18.0	7.5	123.5	50	M8	10.0	92.5	M6X1	8.0	(15.6)	34	26.0	80	9.0	14.0	12.0	5399	10336	1.40	6.25
BGX35BE	48	70	18.0	7.5	153.5	50	M8	10.0	122.5	M6X1	8.0	(15.6)	34	26.0	80	9.0	14.0	12.0	5941	12777	1.84	6.25
BGX45BN	60	86	20.5	8.9	129.0	60	M10	15.5	94.0	M8X1.25	14.4	(16)	45	31.1	105	14.0	20.0	17.0	5911	11105	1.64	9.60
BGX45BL	60	86	20.5	8.9	145.0	60	M10	15.5	110.0	M8X1.25	14.4	(16)	45	31.1	105	14.0	20.0	17.0	7031	13209	1.93	9.60
BGX45BE	60	86	20.5	8.9	174.0	60	M10	15.5	139.0	M8X1.25	14.4	(16)	45	31.1	105	14.0	20.0	17.0	8124	16650	2.42	9.60

行走精度

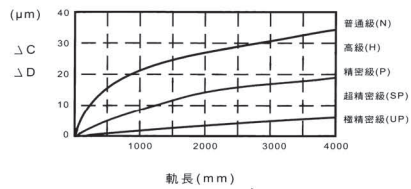
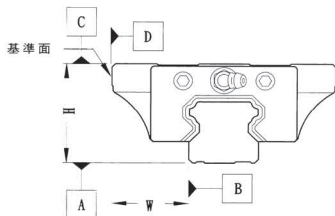


圖 1-1 BG軌長與行走精度

單位：mm

項次	等級	普通級 (N)	高級 (H)	精密級 (P)	超精密級 (SP)	極精密級 (UP)
組合高誤差(H)		±0.1	±0.04	0 -0.04	0 -0.02	0 -0.01
組合寬誤差(W)		±0.1	±0.04	0 -0.04	0 -0.02	0 -0.01
成對高度相互誤差(ΔH)		0.03	0.02	0.01	0.005	0.003
成對寬度相互誤差(ΔW)		0.03	0.02	0.01	0.005	0.003
滑座 C面對軌道 A的行走精度		△C 參考圖 1-1				
滑座 D面對軌道 B的行走精度		△D 參考圖 1-1				

- 高精度
- 低磨擦
- 低噪音
- 低振動