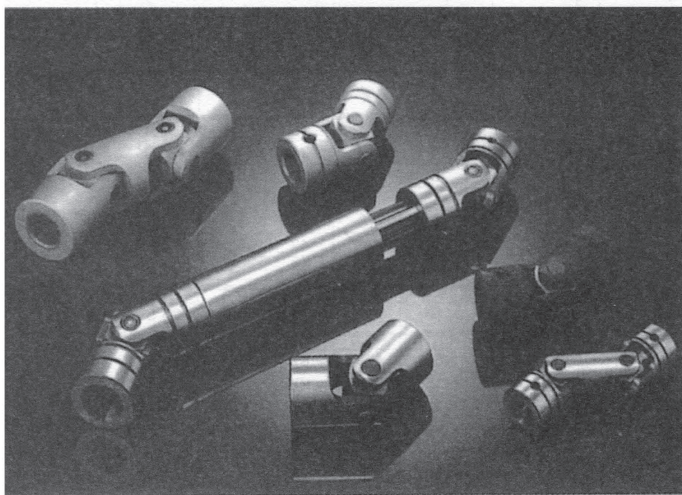


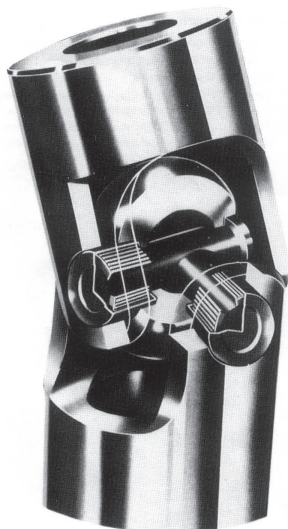
萬向接頭篇

Universal Joint



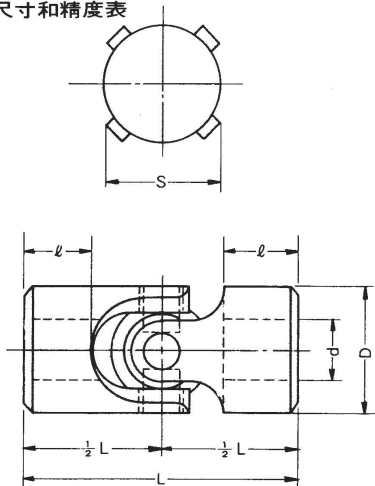
高速萬向接頭無給油

KH型 超級接頭



- KH型超級接頭採用針狀軸承取代原來接頭銷片接合方式，能將軸承部接觸，摩擦等作最大限度控制。
- 能承受高速和擴大角度操作。
- 軸徑 $10^{\circ} \sim 30^{\circ}$ 分9種。
- 最高速度6000rpm 最大傳動扭力23.90m.kg 之最高性能。

■KH型尺寸和精度表

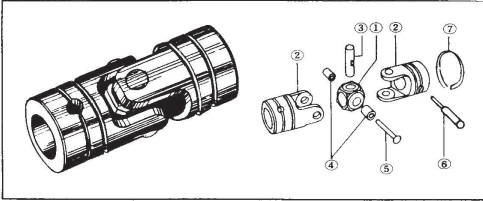


單位%

型號	尺寸 ϕ dH7	ϕ D ± 0.2	L ± 0.2	l ± 0.5	S ± 0.5	靜的破壞 扭力 kgf-m	重量 (g)
KH-10	10	20	45	13	22	22	75
KH-12	12	24	51	14	25	34	125
KH-14	14	28	61	17	29	45	200
KH-16	16	32	69	19	32	80	290
KH-18	18	36	77	21	37	104	430
KH-20	20	40	87	24	42	147	530
KH-22	22	44	95	26	46	220	800
KH-25	25	50	111	30	52	300	1,100
KH-30	30	60	130	36	61.2	400	2,000

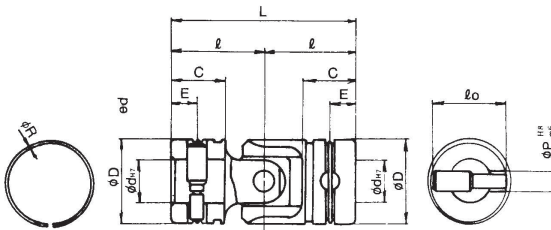
主要用途：銑床、車床、多軸鑽孔機、各種自動機器、專用機、拉線機、軋鋼機、矯正機、滾轉成型機、切條壓床、各種起動機、建築機械、輸送機、紡織機械、食品機械、縫紉機、木工機械、自動包裝機、自動販賣機、農業機械、醫療器具、割草機、製書機等

JCH型系列

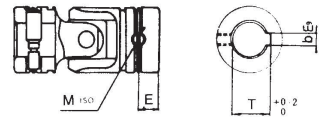


規格編號	名稱	材質	數量
(1)	連接方塊	SCM-21	1
(2)	主體	SCM-21	2
(3)	直線梢	SCM-21	1
(4)	半線梢	SCM-21	2
(5)	鉗接梢	SV34	1
(6)	強力梢	SCM-21	2
(7)	固定環	SWP	1

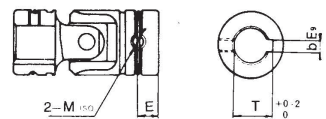
JCH-*-00A**
type- ϕd - code



JCH-*-01A**



JCH-*-02A**



單位%

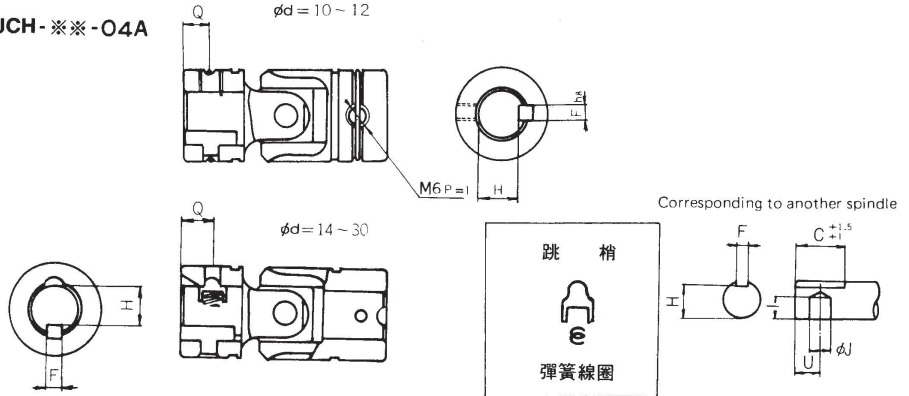
型號	尺寸											容許扭力 (kgf-m)		靜的破壞 扭力(kgf-m)	靜的引張 破壞荷重(kgf)	重量 (g)	
	d	D	C	E	l	L	P	ϕ_o	R	G	強力梢	固定梢					
JCH-03-00A	3	6	9	2.5	13	26	1	5	0.3	—	—	—	—	—	0.04	70	5
JCH-04-00A	4	8	7	4	12	24	1.5	6.8	0.3	—	—	—	0.30	—	0.3	130	8
JCH-05-00A	5	10	9	5	15	30	2	8.7	0.4	—	—	—	0.55	—	1.0	210	12
JCH-06-***	6	12	9	4.5	15.5	31	3	10	0.6	—	0.95	0.64	—	—	1.7	550	15
JCH-08-***	8	15	10	5	18	36	3.5	12.5	0.8	25	1.73	1.16	—	—	3.6	800	30
JCH-10-***	10	19	12	6	21	42	4.5	16.5	1	32	3.58	2.40	—	—	6.5	1420	55
JCH-12-***	12	23	15	7.5	26	52	5	20.5	1	35	5.30	3.55	—	—	15	2440	110
JCH-14-***	14	26	17	8.5	29.5	59	5.8	23	1.2	40	8.32	5.57	—	—	21	2700	155
JCH-16-***	16	30	22	11	37	74	6.5	26.5	1.4	46	11.95	8.00	—	—	32	3980	260
JCH-18-***	18	33	23.5	11.75	40.5	81	7	28.5	1.8	52	15.58	10.44	—	—	41	4520	345
JCH-20-***	20	36	25	12.5	43.5	87	8	31.5	1.8	58	22.62	15.15	—	—	54	5330	465
JCH-22-***	22	40	27	13.5	47	94	9	34.5	2	62	31.50	21.10	—	—	78	6960	630
JCH-25-***	25	44	30	15	52.5	105	10	38.5	2	68	44.18	29.60	—	—	103	8310	790
JCH-30-***	30	51	35	17.5	61	122	11.5	44	2.5	82	70.10	46.96	—	—	156	10580	1160
JCH-35-***	35	59	40	20	70	140	13	52	2.5	90	104.52	70.03	—	—	248	14670	2255
JCH-40-***	40	67	45	22.5	78.5	157	14.5	60	2.5	100	148.62	99.58	—	—	375	19320	2730
JCH-45-***	45	75	50	25	88	176	16	68	2.5	110	203.58	136.40	—	—	490	23210	4350
JCH-50-***	50	83	55	27.5	95.7	191.4	17.5	76	2.5	120	270.60	181.30	—	—	598	29080	5200
JCH-60-88A	60	98	70	—	118	236	—	—	—	140	—	—	—	—	1162	43490	6538

註：無尺寸表示同於JCH-**-00A。

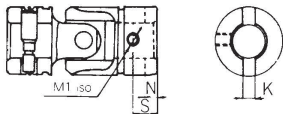
*表中容許扭力數值為梢片破斷強度1/3) (靜負荷0°時)

JCH型系列

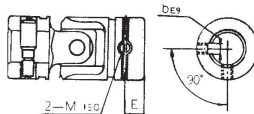
JCH-※※-04A



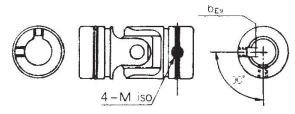
JCH ※※-06A



JCH-※※-08A



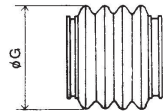
JCH-※※-88A



單位% (Unit %)

型號	尺寸	b	T	M	Q	F	H	I	J	U	K	N	S	M1
JCH-06-※※※	—	—	—	3	—	—	—	—	—	—	3	3.5	4.5	3
JCH-08-※※※	3	9.5	3	—	—	—	—	—	—	—	3	3.5	5	4
JCH-10-※※※	4	11.5	5	5.5	4	7.5	—	—	—	—	4	4.5	5	5
JCH-12-※※※	4	13.5	5	6.5	4	9.5	—	—	—	—	4	4.5	6	6
JCH-14-※※※	5	16	6	10	5	11.5	10	6	6	6	5	5.5	8.5	6
JCH-16-※※※	5	18	6	12	5	13.5	12	6	6	6	5	5.5	9	6
JCH-18-※※※	5	20	6	12	5	15.5	13	8	8	8	5	5.5	10	8
JCH-20-※※※	5	22	6	15	5	17	15	8	8	8	6	6.5	12	8
JCH-22-※※※	7	25	6	15	6	19	16	8	8	8	—	—	—	—
JCH-25-※※※	7	28	8	21	7	21	18	8	8	8	—	—	—	—
JCH-30-※※※	7	33	8	25	7	26	21	10	9	—	—	—	—	—
JCH-35-※※※	10	38.5	10	—	—	—	—	—	—	—	—	—	—	—
JCH-40-※※※	10	43.5	10	—	—	—	—	—	—	—	—	—	—	—
JCH-45-※※※	12	48.5	10	—	—	—	—	—	—	—	—	—	—	—
JCH-50-※※※	12	53.5	10	—	—	—	—	—	—	—	—	—	—	—
JCH-60-8 8 A	15	65	12	—	—	—	—	—	—	—	—	—	—	—

JCH-※※-※※C
附橡膠護套

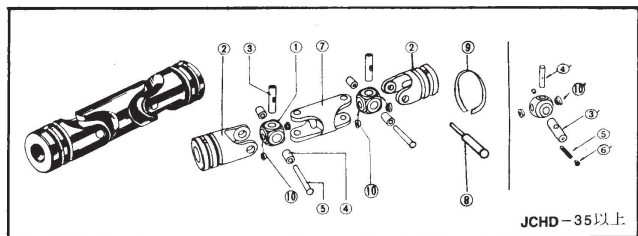


充填潤滑油脂
φ35以上尺寸需另製護套
事先指示

Filled with grease
Over φ35 in size, brllows to order
Instruct us in advance.

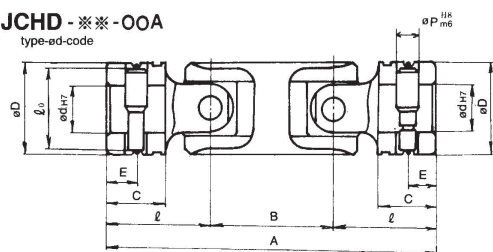
(註) 無表示尺寸同於JCH-※※-00A. No indicating dimension is same as JCH-※※-00A

JCHD型系列

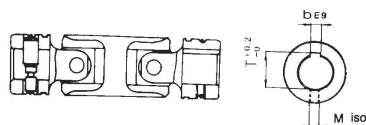


編號	名稱	材質
(1)	連接方塊	SCM-21
(2)	主體	SCM-21
(3)	直線槽 大槽	SCM-21 SCM-3
(4)	半線槽 小槽	SCM-21 SCM-21
(5)	鉗接槽 彈簧槽	SV-34 SK-5
(6)	固定槽加蓋 JCHD-30以下無	
(7)	中間體	SCM-21
(8)	強力槽	SCM-21
(9)	固定環	SWP
(10)	潤滑油蓋和油匙	

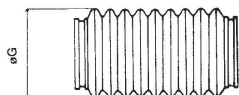
JCHD-***-00A
type-ød-code



JCHD-***-01A



JCHD-***-**C



JCHD-***-02A



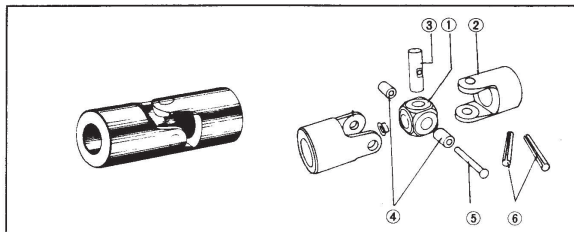
單位%
mm

型號	尺寸	d	D	C	E	l	B	A	P	l _ø	b	T	M	G	靜的破壞力 kgf-m	重量 kgf-m
JCHD-06-***		6	12	9	4.5	15.5	18.5	49.5	3	10	—	—	—	—	1.2	30
JCHD-08-***		8	15	10	5	18	22	58	3.5	12.5	3	9.5	3	26	2.7	60
JCHD-10-***		10	19	12	6	21	25.5	67.5	4.5	16.5	4	11.5	5	32	6.3	95
JCHD-12-***		12	23	15	7.5	26	31	83	5	20.5	4	13.5	5	36	11.2	180
JCHD-14-***		14	26	17	8.5	29.5	35.5	94.5	5.8	23	5	16	6	40	15	250
JCHD-16-***		16	30	22	11	37	43.5	117.5	6.5	26.5	5	18	6	46	24	410
JCHD-18-***		18	33	23.5	11.75	40.5	48	129	7	28.5	5	20	6	52	30	550
JCHD-20-***		20	36	25	12.5	43.5	52	139	8	31.5	5	22	6	58	40	690
JCHD-22-***		22	40	27	13.5	47	56	150	9	34.5	7	25	6	62	58	940
JCHD-25-***		25	44	30	15	52.5	63	168	10	38.5	7	28	8	68	77	1240
JCHD-30-***		30	51	35	17.5	61	73	195	11.5	44	7	33	8	82	117	1775
JCHD-35-***		35	59	40	20	70	84	224	13	52	10	38.5	10	90	186	3180
JCHD-40-***		40	67	45	22.5	78.5	94	251	14.5	60	10	43.5	10	100	281	4150
JCHD-45-***		45	75	50	25	88	106	282	16	68	12	48.5	10	110	360	6225
JCHD-50-***		50	83	55	27.5	95.7	113	304.4	17.5	76	12	53.5	10	120	448	7750

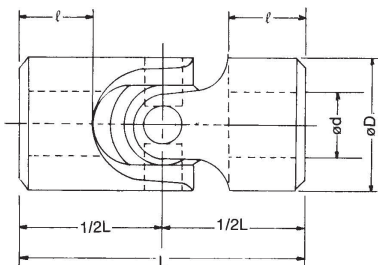
重量表示00A型

註1.中間體未施外徑研磨，無表示尺寸同於JCHD-***-00A

JK型



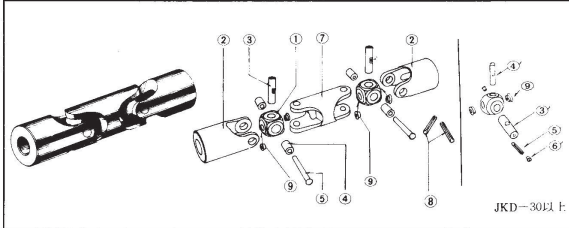
規格 編號	名稱	材質
(1)	連接方塊	SCM21
(2)	主體	S45C
(3)	直線梢	SCM21
(4)	半線梢	SCM21
(5)	鑄接梢	SV34
(6)	彈簧梢	SX5



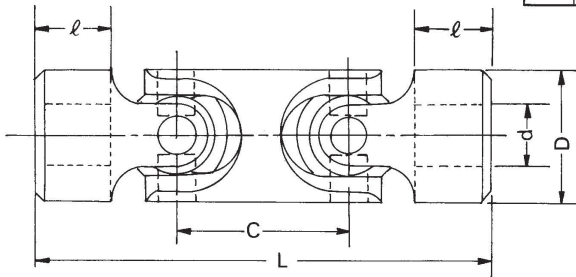
單位%mm

Type 型號	尺寸 Size	de	L	Dø	l	Sector Swing	靜的破壞扭力 kgf-m	重量 (kg) Weight
JK-6		6 ^{+0.015} ₋₀	40 ^{+0.1} _{-0.15}	16 ± 0.1	11	0.08	10	0.05
JK-8		8 "	"	"	"	"	10	0.04
JK-10		10 "	45 ^{+0.1} _{-0.2}	20 ± 0.1	13	0.1	20	0.08
JK-12		12 ^{+0.018} ₋₀	51 "	24 "	14	"	25	0.13
JK-14		14 "	61 "	28 "	17	"	55	0.20
JK-16		16 "	69 ^{+0.15} _{-0.25}	32 ± 0.15	19	0.12	65	0.30
JK-18		18 "	77 "	36 "	21	"	-	0.43
JK-20		20 ^{+0.021} ₋₀	87 "	40 "	24	0.14	125	0.52
JK-22		22 "	95 "	44 ± 0.2	26	"	150	0.80
JK-25		25 "	111 "	50 "	30	0.16	270	1.10
JK-30		30 "	130 ^{+0.2} _{-0.3}	60 "	36	"	400	2.00
JK-35		35 ^{+0.025} ₋₀	149 "	70 "	41	0.17	700	3.20
JK-40		40 "	167 "	80 ± 0.25	46	0.18	1100	4.80
JK-45		45 "	185 "	88 "	51	"	1300	7.00
JK-50		50 "	205 "	98 "	56	"	-	8.50
JK-60		60 ^{+0.030} ₋₀	247 "	118 "	69	0.2	2000	11.80
JK-70		70 "	320 ^{+0.3} _{-0.1}	135 ± 0.3	85	0.4	2250	16.00
JK-80		80 ^{+0.036} ₋₀	360 "	155 "	105	"	2800	21.00
JK-100		100 "	500 "	175 "	130	"	3550	28.00

JKD型



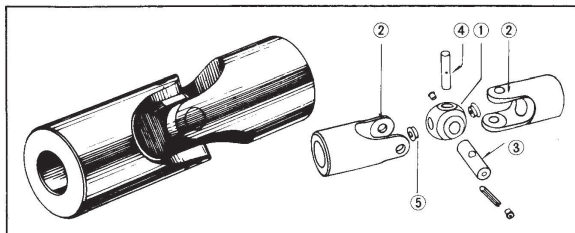
編號	名稱	材質
(1)	連接方塊	SCM-21
(2)	主體	S45C
(3)	直線槽 大槽	SCM-21 SCM-3
(4)	半線槽 小槽	SCM-21 SCM-21
(5)	彈簧槽 彈簧槽	SV-34 SX-5
(6)	固定槽加蓋 10~25以下用	
(7)	中間體	S45C
(8)	彈簧槽	SX-5
(9)	潤滑油蓋和油匙	



單位:mm

KO.	Code	i	L	D	l	C	Sector Swing	(g) Weight
	JKD-10	10 ^{+0.015} ₋₀	71 ^{+0.6} _{-0.8}	20±0.1	13	23	0.1	123
	JKD-12	12 ^{+0.018} ₋₀	83°	24	14	32	"	200
	JKD-14	14°	98°	28	17	37	"	380
	JKD-16	16°	113°	32±0.15	19	44	0.12	480
	JKD-18	18°	126°	36	21	49	"	850
	JKD-20	20 ^{+0.021} ₋₀	141°	40	24	54	0.14	1,000
	JKD-22	22°	154°	44±0.2	26	59	"	1,500
	JKD-25	25°	180°	50	30	69	0.16	1,900
	JKD-30	30°	207 ^{+0.7} _{-0.9}	60	36	77	"	3,000
	JKD-35	35 ^{+0.025} ₋₀	240°	70	41	91	0.17	5,500
	JKD-40	40°	269°	80±0.25	46	102	0.18	7,900
	JKD-45	45°	298°	88	51	113	"	13,000
	JKD-50	50°	331°	98	56	125	"	16,500
	JKD-60	60 ^{+0.030} ₋₀	385°	118	69	132	0.2	25,000
	JKD-70	70°	510 ^{+0.6} _{-0.6}	135±0.3	85	190	0.4	30,500
	JKD-80	80 ^{+0.036} ₋₀	560°	155	105	200	"	36,000
	JKD-100	100°	790°	175	130	290	"	42,000

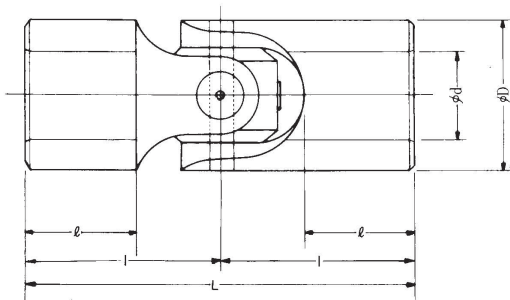
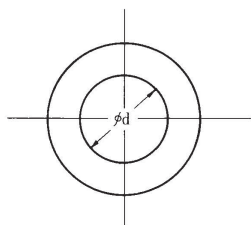
BJ型



規格 編號	名稱	材質	數量
(1)	連接方塊	SCM3	1
(2)	主 體	SCM3	2
(3)	大 梢	SCM3	1
(4)	小 梢	SCM3	1
(5)	油 嘴		2

特 長

- 低速重負荷
- 小回轉半徑大傳達扭力
- 單型能分解
- 製鐵用磨機 ● 大型鋼管矯正機 ● 軋鋼機
- 最適合大型機械設備動力傳達用

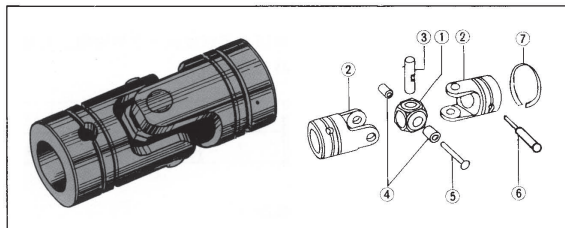


單位%_m

型號	尺寸	dφ 推奨軸徑範圍	Dφ	L	l	l	最大扭矩 kgf·m
BJ-140		55 ^φ - 85 ^φ	140	350	98	175	900
BJ-160		65 - 95	160	400	110	200	1,200
BJ-180		70 - 105	180	450	125	225	1,500
BJ-200		80 - 120	200	500	140	250	1,800
BJ-250		100 - 150	250	640	180	320	2,200
BJ-320		130 - 190	320	800	225	400	3,000

註：依據使用條件（轉數、角度、扭力、全長、輸入輸出、軸徑等）提出認可圖。

NC型系列

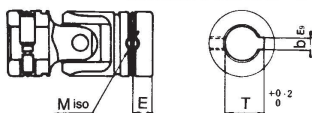


規格編號	名稱	材質	數量
(1)	連接方塊	SCM-21	1
(2)	主體	SCM-21	2
(3)	直線梢	SCM-21	1
(4)	半線梢	SCM-21	2
(5)	鉚接梢	SV34	1
(6)	強力梢	SCM-21	2
(7)	固定環	SWP	1

NC-※※-01A 附件：強力固定銷 1個，彈簧環 2個
不可追加加工

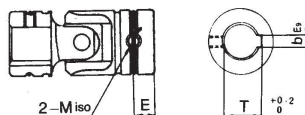
Accessories: 1 pc. of powerful knock pin
2 pcs. of ring springs

No additional process can be made



NC-※※-02A 附件：彈簧環 2個
不可追加加工

Accessories: 2 pcs. of ring springs
No additional process can be made

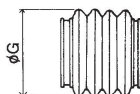


NC-※※-05A 手動專用，無熱處理
(For manual use only, No quenching)



能追加加工 Additional process can be made

NC-※※-※※C (with a rubber cover)
(附橡膠護套)



Filled with grease
Please instruct us in advance

充填潤滑油脂
事前指示之

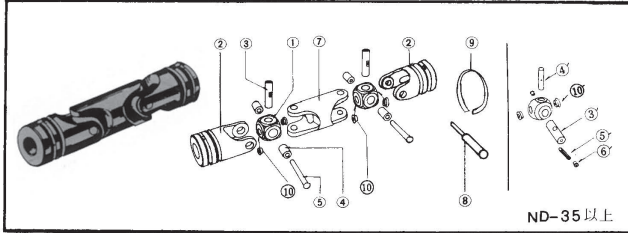
型號	尺寸	單位%										
		d	D	C	E	ℓ	L	P	ℓ ₀	b	T	M
NC-06-※※※	6	12	9	4.5	15.5	31	3	10	—	—	—	—
NC-08-※※※	8	15	10	5	18	36	3.5	12.5	—	—	—	25
NC-10-※※※	10	20	12	6	21	42	4.5	16.5	—	—	—	32
NC-12-※※※	12	23	15	7.5	26	52	5	20.5	4	13.5	5	35
NC-14-※※※	14	26	17	8.5	29.5	59	5.8	23	5	16	6	40
NC-16-※※※	16	30	22	11	37	74	6.5	26.5	5	18	6	46
NC-18-※※※	18	33	23.5	11.75	40.5	81	7	28.5	5	20	6	52
NC-20-※※※	20	36	25	12.5	43.5	87	8	31.5	5	22	6	58
NC-25-※※※	25	44	30	15	52.5	105	10	38.5	7	28	8	68
NC-30-※※※	30	51	35	17.5	61	122	11.5	44	7	33	8	82

註)無表示尺寸同於ND-***-00A

ND型未設貯油器，需作運轉初期加油和定期加油，如能使用橡膠護套內充填油脂更為理想。加油最好在接頭四周塗以油脂或使用#90滑輪系潤滑油。

Remark: No indicating dimension is same as NC-**-00A.
As NC type is not equipped with the oil reservoir, lubrication at the initial time of driving as well as regular lubrication is required. Using a rubber cover attachment filled with grease is preferable, too. It is advisable to put grease on joints from outside or to use lubricating oil of turbine #90 as lubricant.

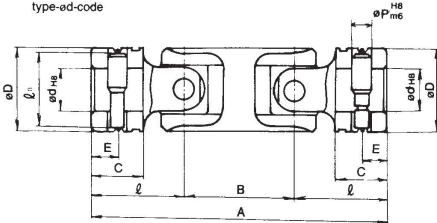
ND型系列



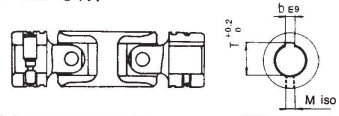
ND-35以上

編號	規格名稱	材質
(1)	連接方塊	SCW-21
(2)	主體	SCW-21
(3)	直齒輪 大齒	SCW-3
(4)	半齒輪 小齒	SCW-21
(5)	彈簧 彈簧	ST-34 SK-5
(6)	固定端加蓋 ND-30以下無	
(7)	中間體	SCW-21
(8)	強力帽	SCW-21
(9)	固定環	SXP
(10)	潤滑油加蓋和油匙	

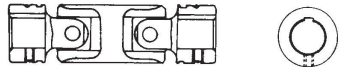
ND-**-00A
type-ed-code



ND-**-01A

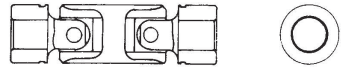


ND-**-02A



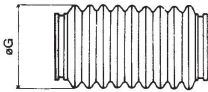
ND-**-05A (手動專用、無熱處理)

(For manual use only, No quenching)



可追加加工 Additional process can be made.

ND-**-**C (橡膠套) (with a rubber cover)



充填潤滑油脂 Filled with grease.
事前請指示 Please instruct us in advance.

單位%

型號	尺寸	d	D	C	E	ℓ	B	A	P	ℓ _o	b	T	M	G
ND-06-****		6	12	9	4.5	15.5	18.5	49.5	3	10	—	—	—	—
ND-08-****		8	15	10	5	18	22	58	3.5	12.5	—	—	—	26
ND-10-****		10	20	12	6	21	25.5	67.5	4.5	16.5	—	—	—	32
ND-12-****		12	23	15	7.5	25	31	83	5	20.5	4	13.5	5	36
ND-14-****		14	26	17	8.5	29.5	35.5	94.5	5.8	23	5	16	6	40
ND-16-****		16	30	22	11	37	43.5	117.5	6.5	26.5	5	18	6	46
ND-18-****		18	33	23.5	11.75	40.5	48	129	7	28.5	5	20	6	52
ND-20-****		20	36	25	12.5	43.5	52	139	8	31.5	5	22	6	58
ND-25-****		25	44	30	15	52.5	63	168	10	38.5	7	28	8	68
ND-30-****		30	51	35	17.5	61	73	195	11.5	44	7	33	8	82

註)無表示尺寸同於ND--00A
ND型未設貯油器，需作運轉初期加油和定期加油，如能使用橡膠護套內充填油脂更為理想。加油最好在接頭四周塗以油脂或使用#90滑輪系潤滑油。

Remark: No indicating dimension is same as ND-**-00A.
As ND type is not equipped with the oil reservoir, lubrication at the initial time of driving as well as regular lubrication is required. Using a rubber cover attachment filled with grease is preferable, too. It is advisable to put grease on joints from outside or to use lubricating oil of turbine #90 as lubricant.

SP系列伸縮型

中間軸採用花鍵軸容易作變位滑動，利用下空調固定安裝間隔能脫落標準規格安裝 JCH 型萬向接頭。

As the intermediate spindle adopt the spline, sliding by displacement is smooth.

By making use of space of F, it is possible to exchange at the fixed setting distance.

Attach JCH type of universal joint to standard product.

下列情形，事先詢問或提供草圖

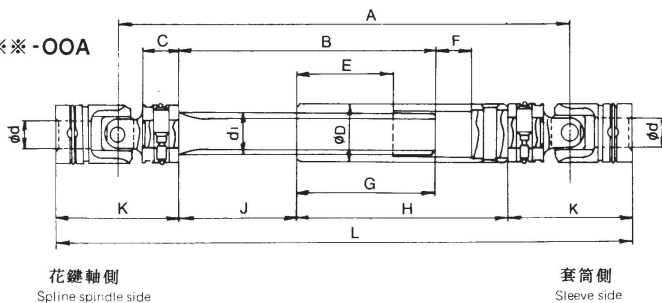
- 伸縮量變大
- 高速回轉特別講求精度
- 使用 JCH 型以外萬向接頭
- 複數花鍵軸須要相互交換性

Please contact us or instruct us by your sketch in the following case.

- When a value of expansion becomes big.
- When high accuracy is required for high speed revolution.
- When universal joints except with JCH type are used.
- When plural splines are interchangeable each other.

標準品 SP-※※-00A

Standard type



※ 花鍵軸與套筒需對準

※ 通常將套筒側裝於驅動側

The mark embossed on both spline spindle and sleeve should be met when assembly. ⇄

Generally speaking, sleeve side is assembled at the side of driving shaft.

單位 %

型號	尺寸	d	A	B	C	D	d ₁ Spline	E	F	G	H	J	K	L	伸縮 expansion	X	Y
SP-08-00A	8	127	65	10	17		漸伸線 (Involute) 大徑 10m - 0.752 - 11	20	11	39	65	26	36	163	+19 -11	100	---
SP-10-00A	10	135	65	12	17		漸伸線 (Involute) 大徑 10m - 0.752 - 11	20	13	37	65	28	42	177	+17 -13	100	---
SP-12-00A	12	173	68	15	23	16 × 13 × 3.5 - 6		40	16	56	89	32	52	225	+16 -16	195	285
SP-14-00A	14	181	67	17	23	16 × 13 × 3.5 - 6		40	18	54	89	33	59	240	+14 -18	195	285
SP-16-00A	16	234	115	22	30	20 × 16 × 4 - 6		40	23	75	120	40	74	308	+35 -23	110	230
SP-18-00A	18	246	115	23.5	30	20 × 16 × 4 - 6		40	26.5	70	120	45	81	327	+30 -26.5	110	230
SP-20-00A	20	257	118	25	36	22 × 18 × 5 - 6		40	27	73	125	45	87	344	+33 -27	115	260
SP-22-00A	22	266	115	27	40	25 × 21 × 5 - 6		40	30	68	125	47	94	360	+28 -30	105	270
SP-25-00A	25	300	153	30	44	28 × 23 × 6 - 6		45	32	83	145	50	105	405	+38 -32	185	410
SP-30-00A	30	342	145	35	51	32 × 26 × 6 - 6		50	40	85	160	60	122	464	+35 -40	170	375
SP-35-00A	35	375	150	40	59	38 × 32 × 8 - 6		50	45	85	170	65	140	515	+35 -45	160	395
SP-40-00A	40	417	165	45	67	42 × 36 × 8 - 6		60	50	95	190	70	157	574	+35 -50	140	410
SP-45-00A	45	461	150	50	75	45 × 41 × 8 - 8		70	55	105	210	75	176	637	+35 -60	155	420
SP-50-00A	50	505.6	199.2	55	83	52 × 46 × 9 - 8		80	60	115	230	84.2	191.4	697	+35 -60	95	430
SP-60-88A	60	—	—	70	98	62 × 54 × 10 - 8		90	75	—	—	—	—	—	+35 -70	—	—

註：伸縮欄 (±) 尺寸表示伸縮空間

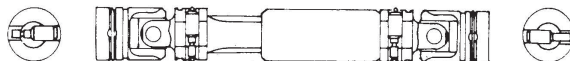
SP-60-88A 為套筒和驅動軸焊接構造

Remark: (—) Dimension of the expansion column indicate space F that is used for detachment.

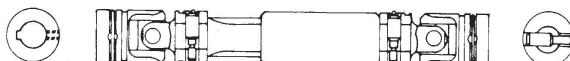
SP系列伸縮型

標準品名稱

SP-※※-00A



SP-※※-01A



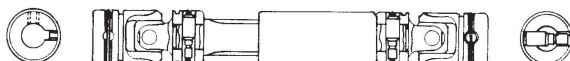
SP-※※-02A



SP-※※-08A

SIZE#8無鍵溝

Size #8 have no keyway



SP-※※-88A

SIZE#8無鍵溝

Size #8 have no keyway



標準品以外規格

事前詢問或草圖指示

Please contact us in advance or instruct us by your sketch.

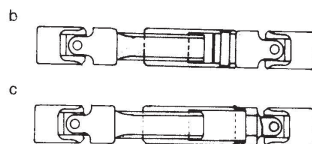
1. 比標準品短時

※ 請告知全長尺寸

- 脫用空間不要時，可減去F
- 縮短B、G、H、J尺寸
- 熔接套筒和驅動軛

When you need a shorter one than standard type.

- Please instruct us with overall L.
- Delete F which is a space for exchange when it is not necessary.
 - Make short dimension of B, G, H, J.
 - Weld sleeve with driving yoke



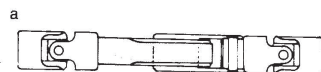
2. 比標準品長時

※ 全長請指示

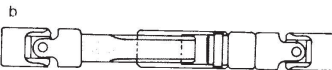
- L+X時，僅加長花鍵軸
- 超過L+X至L+Y時加長連接梢
- L+Y時，對管子加長

When you need longer one than standard type.

- Please instruct us with overall L.
- up to L + X
Make only a spline spindle longer.



- from L + X up to L + Y
Make long by connecting pin.



- up to L + Y
Make long by pipe.



3. 想改變左右接點時

縮小花鍵軸側

When you want change joint size.

Make the side of spline spindle small.



4. 想使用標準規格外

JCH型

僅改變二端驅動軛

When you need JCH type except with standard type

Change driving yoke at the both ends.

